


National
Hardware™

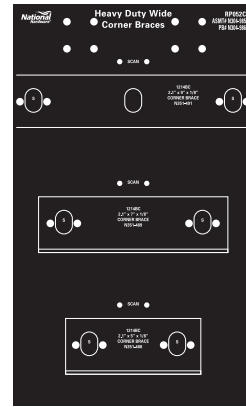


HEAVY DUTY REINFORCEMENT

N304-985 • RP052C WIDE CORNER BRACES - STRUCTURAL

Stock #	Description	QTY Needed	Stock # Qty Order
N351-491	1214BC 2.1X9 1/8 CRN BRC	5	5
N351-489	1214BC 2.1X7 1/8 CRN BRC	5	5
N351-488	1214BC 2.1X5 1/8 CRN BRC	5	5
N304-986	RP052C HD Wide Corner Braces 9" x 15" Panel Board	1	1
N155-341	J - HOOKS (2/PK)	4	2
N272-088	1-1/4X2" Label Holder (10/BX)	3	1
N350-441	8" Flip Scan Only (10/BX)	3	1
N350-440	6" Straight Hooks (10/BX)	6	1

List Price \$79.50

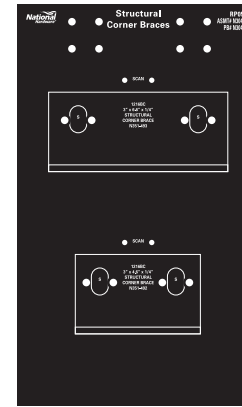


9" x 15"

N304-987 • RP053C WIDE CORNER BRACES - STRUCTURAL STEEL

Stock #	Description	QTY Needed	Stock # Qty Order
N351-493	1216BC 3X6.6 1/4 CRN BRC	5	5
N351-492	1216BC 3X4.6 1/4 CRN BRC	5	5
N304-988	RP053C STRUCTURAL CORNER BRACES 9" x 15" Panel Board	1	1
N155-341	J - HOOKS (2/PK)	4	2
N272-088	1-1/4X2" Label Holder (10/BX)	2	1
N350-441	8" Flip Scan Only (10/BX)	2	1
N350-440	6" Straight Hooks (10/BX)	4	1

List Price \$122.50

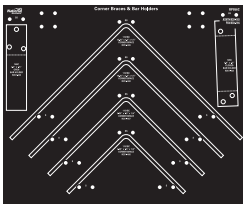


9" x 15"

N304-993 • RP056C CORNER BRACES & BAR HOLDERS

Stock #	Description	QTY Needed	Stock # Qty Order
N351-503	15BC OPEN BAR HLDR	5	5
N351-502	14BC CLSD BAR HLDR	5	5
N351-469	1151BC 12.25X1.5 1/4 BRC	5	5
N351-468	1151BC 10.25X1.5 1/4 BRC	5	5
N351-467	1151BC 8.25X1.5 1/4 BRC	5	5
N351-466	1151BC 6.25X1.5 1/4 BRC	5	5
N304-994	RP056C CNR BRACES & BR HLDR 18" x 15" Panel Board	1	1
N155-341	J - HOOKS (2/PK)	4	2
N272-088	1-1/4X2" Label Holder (10/BX)	6	1
N269-936	8" Straight Flip Hooks (10/BX)	8	1
N350-440	6" Straight Hooks (10/BX)	6	1

List Price \$253.75

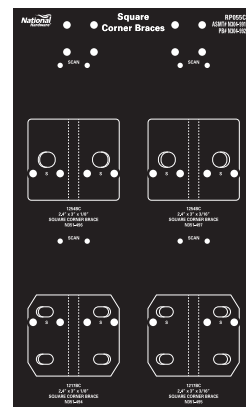


18" x 15"

N304-991 • RP055C SQUARE CORNER BRACES

Stock #	Description	QTY Needed	Stock # Qty Order
N351-496	1154BC 2.4X3 1/8 CRN BRC	5	5
N351-497	1154BC 2.4X3 3/16 CRNBRC	5	5
N351-494	1217BC 2.4X3 1/8 CRN BRC	5	5
N351-495	1217BC 2.4X3 3/16 CRNBRC	5	5
N304-992	RP055C SQUARE BRACES 9" x 15" Panel Board	1	1
N155-341	J - HOOKS (2/PK)	4	2
N272-088	1-1/4X2" Label Holder (10/BX)	4	1
N350-441	8" Flip Scan Only (10/BX)	4	1
N350-440	6" Straight Hooks (10/BX)	8	1

List Price \$90.00

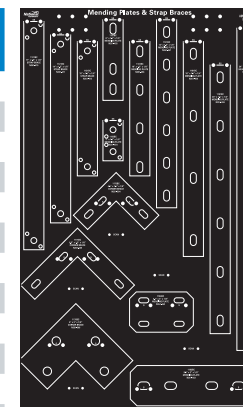


9" x 15"

N304-981 • RP050B MENDING PLATES

Stock #	Description	QTY Needed	Stock # Qty Order
N351-470	1121BC 17 1/8 STRP BRC	5	5
N351-471	1121BC 14 1/8 STRP BRC	5	5
N351-472	1121BC 10 1/8 STRP BRC	5	5
N351-455	1181BC 6 1/8 MND PLT	5	5
N351-456	1181BC 10 1/8 MND PLT	5	5
N351-457	1181BC 14 1/8 MND PLT	5	5
N351-458	1181BC 16 1/4 MND PLT	5	5
N351-459	1181BC 20 1/4 MND PLT	5	5
N351-461	1181BC 24 1/4 MND PLT	5	5
N351-454	1182BC 3 1/8 MND PLT	5	5
N351-504	1175BC 4.5 1/8 CRN BRC	5	5
N351-505	1175BC 6.5 1/8 CRN BRC	5	5
N351-506	1176BC 6X3 1/8 CRN BRC	5	5
N351-462	1184BC 4.7X3 1/8 MND PLT	5	5
N351-453	1183BC 9.5 1/8 MND PLT	5	5
N304-982	RP050B MENDING PLATES 18" x 30" Panel Board	1	1
N155-341	J - HOOKS (2/PK)	6	3
N272-088	1-1/4X2" Label Holder (10/BX)	15	2
N350-440	6" Straight Hooks (10/BX)	10	1
N269-936	8" Straight Flip Hooks (10/BX)	10	1
N350-441	8" Flip Scan Only (10/BX)	5	1

List Price \$418.50

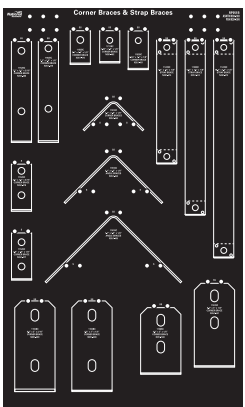


18" x 30"

N304-983 • RP051B CORNER BRACES

Stock #	Description	QTY Needed	Stock # Qty Order
N351-480	1152BC 7.5,1.6 3/16 BRC	5	5
N351-478	1152BC 7.5,1.6 1/8 BRC	5	5
N351-476	1152BC 2.5,1.6 1/8 BRC	5	5
N351-482	1211BC 1.7 1/8 CRN BRC	5	5
N351-481	1153BC 2.9,1.7 1/8 BRC	5	5
N351-475	1122BC 9.3 1/8 45D BRC	5	5
N351-474	1122BC 13.3 1/8 45D BRC	5	5
N351-473	1122BC 16.3 1/8 45D BRC	5	5
N351-463	1151BC 3.1X1.5 1/8 BRC	5	5
N351-479	1152BC 3.5,1.6 3/16 BRC	5	5
N351-464	1151BC 5.1X1.5 1/8 BRC	5	5
N351-477	1152BC 3.5,1.6 1/8 BRC	5	5
N351-465	1151BC 7.1X1.5 1/8 BRC	5	5
N351-499	1155BC 6.8X3 3/16 CRNBRC	5	5
N351-498	1155BC 6.8X3 1/8 CRN BRC	5	5
N351-500	1156BC 4.9X3 1/8 CRN BRC	5	5
N351-501	1157BC 6.2X3 1/8 CRN BRC	5	5
N304-984	RP051B CORNER BRACES 18" x 30" Panel Board	1	1
N155-341	J - HOOKS (2/PK)	6	3
N272-088	1-1/4X2" Label Holder (10/BX)	18	2
N350-440	6" Straight Hooks (10/BX)	6	1
N269-936	8" Straight Flip Hooks (10/BX)	18	2

List Price \$397.50

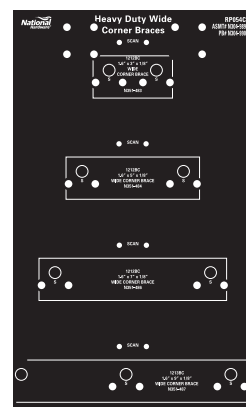


18" x 30"

N304-989 • RP054C WIDE CORNER BRACES

Stock #	Description	QTY Needed	Stock # Qty Order
N351-483	1212BC 1.6X3 1/8 CRN BRC	5	5
N351-484	1212BC 1.6X5 1/8 CRN BRC	5	5
N351-486	1212BC 1.6X7 1/8 CRN BRC	5	5
N351-487	1213BC 1.6X9 1/8 CRN BRC	5	5
N304-990	RP054C Wide Corner Braces Panel Board	1	1
N155-341	J - HOOKS (2/PK)	4	2
N272-088	1-1/4X2" Label Holder (10/BX)	4	1
N350-441	8" Flip Scan Only (10/BX)	4	1
N350-440	6" Straight Hooks (10/BX)	8	1

List Price \$80.00



9" x 15"

For more info about merchandising boards, contact your local sales representative.

Stock #	Catalog #	Product Type	Product Size	Material	Finish	Packaging Type	Box QTY	List Price	UPC	Assortment Board #
N351-453	1183BC	Mending Plates -Rectangular	9.5X3X1/8	Steel	Black	Boxed Loose	5	5.25	886780005578	RP050B
N351-454	1182BC	Mending Plates - 45° holes	3X1.3X1/8	Steel	Black	Boxed Loose	5	1.75	886780005585	RP050B
N351-455	1181BC	Mending Plates - Long	6X1.5X1/8	Steel	Black	Boxed Loose	5	3.00	886780005592	RP050B
N351-456	1181BC	Mending Plates - Long	10X1.5X1/8	Steel	Black	Boxed Loose	5	3.50	886780005608	RP050B
N351-457	1181BC	Mending Plates - Long	14X1.5X1/8	Steel	Black	Boxed Loose	5	5.00	886780005615	RP050B
N351-458	1181BC	Mending Plates - Long	16X1.5X1/4	Steel	Black	Boxed Loose	5	9.75	886780005622	RP050B
N351-459	1181BC	Mending Plates - Long	20X1.5X1/4	Steel	Black	Boxed Loose	5	12.00	886780005639	RP050B
N351-461	1181BC	Mending Plates - Long	24X1.5X1/4	Steel	Black	Boxed Loose	5	12.30	886780005646	RP050B
N351-462	1184BC	Mending Plates - Square	4.7X3X1/8	Steel	Black	Boxed Loose	5	3.50	886780005653	RP050B
N351-463	1151BC	Corner Braces	3.1X1.5X1/8	Steel	Black	Boxed Loose	5	3.30	886780005660	RP051B
N351-464	1151BC	Corner Braces	5.1X1.5X1/8	Steel	Black	Boxed Loose	5	3.50	886780005677	RP051B
N351-465	1151BC	Corner Braces	7.1X1.5X1/8	Steel	Black	Boxed Loose	5	4.50	886780005684	RP051B
N351-466	1151BC	Corner Braces	6.25X1.5X1/4	Steel	Black	Boxed Loose	5	7.50	886780005691	RP056C
N351-467	1151BC	Corner Braces	8.25X1.5X1/4	Steel	Black	Boxed Loose	5	9.00	886780005707	RP056C
N351-468	1151BC	Corner Braces	10.25X1.5X1/4	Steel	Black	Boxed Loose	5	10.00	886780005714	RP056C
N351-469	1151BC	Corner Braces	12.25X1.5X1/4	Steel	Black	Boxed Loose	5	14.00	886780005721	RP056C
N351-470	1121BC	Strap Braces - 45° Flat	17X1.5X1/8	Steel	Black	Boxed Loose	5	5.00	886780005738	RP050B
N351-471	1121BC	Strap Braces - 45° Flat	14X1.5X1/8	Steel	Black	Boxed Loose	5	4.10	886780005745	RP050B
N351-472	1121BC	Strap Braces - 45° Flat	10X1.5X1/8	Steel	Black	Boxed Loose	5	3.25	886780005752	RP050B
N351-473	1122BC	Strap Braces - 90° Support	16.3X1.5X1/8	Steel	Black	Boxed Loose	5	5.50	886780005769	RP051B
N351-474	1122BC	Strap Braces - 90° Support	13.3X1.5X1/8	Steel	Black	Boxed Loose	5	4.45	886780005776	RP051B
N351-475	1122BC	Strap Braces - 90° Support	9.3X1.5X1/8	Steel	Black	Boxed Loose	5	3.90	886780005783	RP051B
N351-476	1152BC	Corner Braces - Offset Leg	2.5,1.6X1.5X1/8	Steel	Black	Boxed Loose	5	2.50	886780005790	RP051B
N351-477	1152BC	Corner Braces - Offset Leg	3.5,1.6X1.5X1/8	Steel	Black	Boxed Loose	5	3.00	886780005806	RP051B
N351-478	1152BC	Corner Braces - Offset Leg	7.5,1.6X1.5X1/8	Steel	Black	Boxed Loose	5	4.50	886780005813	RP051B
N351-479	1152BC	Corner Braces - Offset Leg	3.5,1.6X1.5X3/16	Steel	Black	Boxed Loose	5	3.60	886780005820	RP051B
N351-480	1152BC	Corner Braces - Offset Leg	7.5,1.6X1.5X3/16	Steel	Black	Boxed Loose	5	5.00	886780005837	RP051B
N351-481	1153BC	Corner Braces - Offset Leg, 45° Holes	2.94,1.7X1.5X1/8	Steel	Black	Boxed Loose	5	2.75	886780005844	RP051B
N351-482	1211BC	Corner Braces - 45° Holes	1.65X1.5X1/8	Steel	Black	Boxed Loose	5	2.00	886780005851	RP051B
N351-483	1212BC	Wide Corner Brace	1.6X3X1/8	Steel	Black	Boxed Loose	5	2.75	886780005868	RP054C
N351-484	1212BC	Wide Corner Brace	1.6X5X1/8	Steel	Black	Boxed Loose	5	3.50	886780005875	RP054C
N351-486	1212BC	Wide Corner Brace	1.6X7X1/8	Steel	Black	Boxed Loose	5	4.50	886780005882	RP054C
N351-487	1213BC	Wide Corner Brace	1.6X9X1/8	Steel	Black	Boxed Loose	5	5.25	886780005899	RP054C
N351-488	1214BC	Wide Corner Brace - Structural	2.1X5X1/8	Steel	Black	Boxed Loose	5	4.20	886780005905	RP052C
N351-489	1214BC	Wide Corner Brace - Structural	2.1X7X1/8	Steel	Black	Boxed Loose	5	5.45	886780005912	RP052C
N351-491	1214BC	Wide Corner Brace - Structural	2.1X9X1/8	Steel	Black	Boxed Loose	5	6.25	886780005929	RP052C
N351-492	1216BC	Wide Corner Brace - Cut from Rolled Structural Steel	3X4.6X1/4	Steel	Black	Boxed Loose	5	12.00	886780005936	RP053C
N351-493	1216BC	Wide Corner Brace - Cut from Rolled Structural Steel	3X6.6X1/4	Steel	Black	Boxed Loose	5	12.50	886780005943	RP053C
N351-494	1217BC	Square Corner Brace - Chamfered	2.4X3X1/8	Steel	Black	Boxed Loose	5	3.75	886780005950	RP055C
N351-495	1217BC	Square Corner Brace - Chamfered	2.4X3X3/16	Steel	Black	Boxed Loose	5	5.50	886780005967	RP055C
N351-496	1154BC	Square Corner Brace - Rounded	2.4X3X1/8	Steel	Black	Boxed Loose	5	3.75	886780005974	RP055C
N351-497	1154BC	Square Corner Brace - Rounded	2.4X3X3/16	Steel	Black	Boxed Loose	5	5.00	886780005981	RP055C
N351-498	1155BC	Corner Braces - Offset Leg, Chamfered	6.8,3X3X1/8	Steel	Black	Boxed Loose	5	5.50	886780005998	RP051B
N351-499	1155BC	Corner Braces - Offset Leg, Chamfered	6.8,3X3X3/16	Steel	Black	Boxed Loose	5	8.00	886780006001	RP051B
N351-500	1156BC	Corner Brace - Structural, Chamfered	4.9X3X1/8	Steel	Black	Boxed Loose	5	5.50	886780006018	RP051B
N351-501	1157BC	Corner Brace - Structural, Chamfered	6.2X3X1/8	Steel	Black	Boxed Loose	5	13.00	886780006025	RP051B
N351-502	14BC	Closed Bar Holder	6.4X1.5	Steel	Black	Boxed Loose	5	5.35	886780006032	RP056C
N351-503	15BC	Open Bar Holder	6.3X1.5	Steel	Black	Boxed Loose	5	4.90	886780006049	RP056C
N351-504	1175BC	Corner Plate	4.5X1.5X1/8	Steel	Black	Boxed Loose	5	3.80	886780006056	RP050B
N351-505	1175BC	Corner Plate	6.5X1.5X1/8	Steel	Black	Boxed Loose	5	4.00	886780006063	RP050B
N351-506	1176BC	Corner Plate - Structural	6X3X1/8	Steel	Black	Boxed Loose	5	7.50	886780006070	RP050B